

THE NAVIGATOR FLOORPLAN

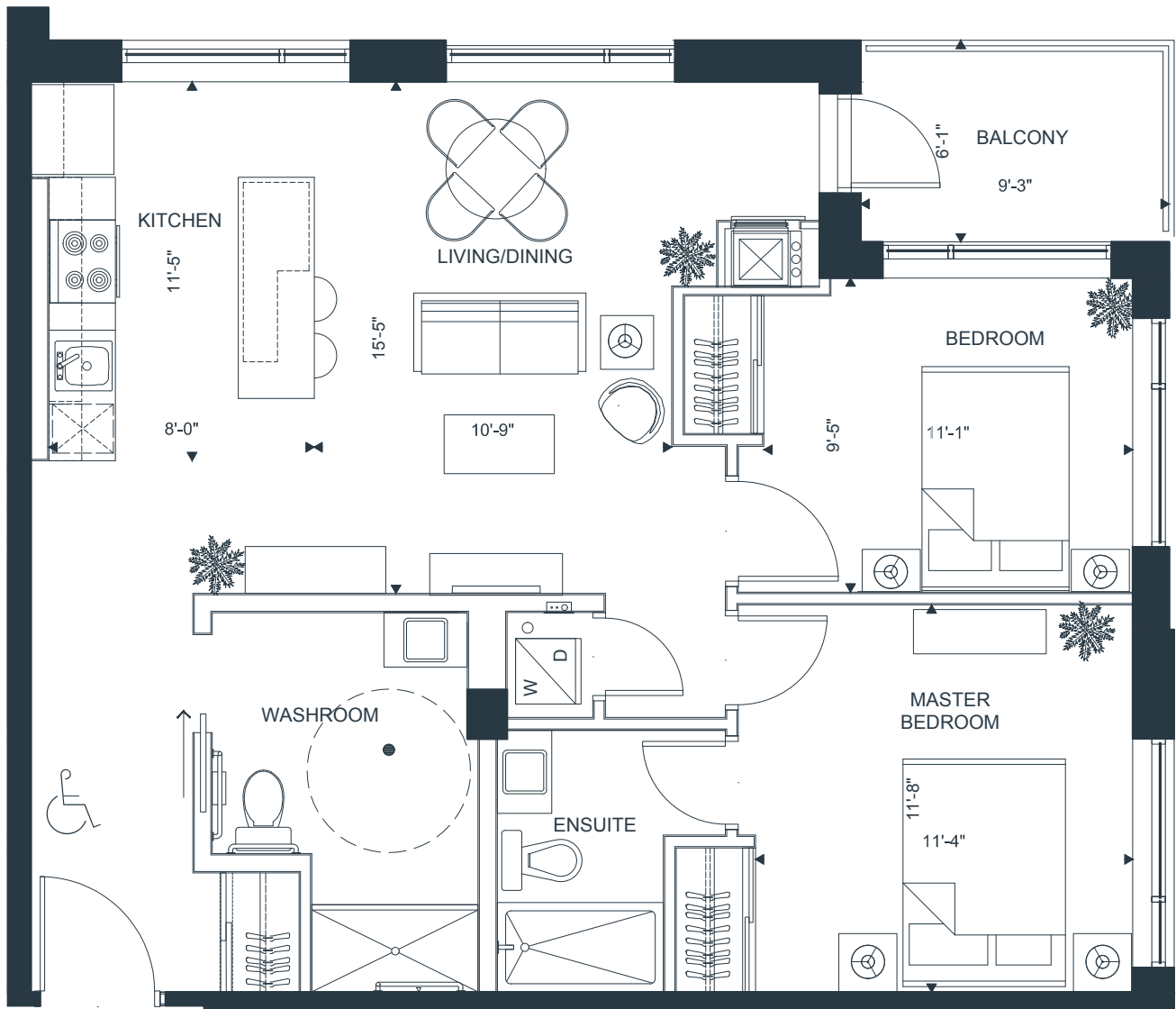
THE PIER



AT CANOE BAY

950 SQ. FT. + 50 SQ. FT. BALCONY

2 BEDROOMS | 2 BATHROOMS



CANOE BAY

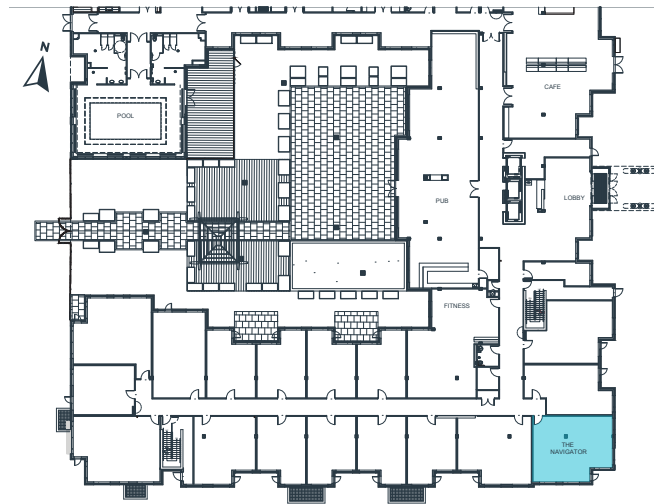
FLOORPLATES

THE NAVIGATOR

950 SQ. FT. + 50 SQ. FT. BALCONY

2 BEDROOMS | 2 BATHROOMS

LEVEL 1



LEVEL 2



LEVEL 3-6



CANOE BAY